

# Storage Series



## Workflow Engineered Shared Storage for Editing Workgroups

### Award Winning Shared Storage for Multi-format productions

EditShare™ Storage Series shared storage solutions maximize media sharing for multi-user editing environments, leveraging the cost effectiveness of Gigabit Ethernet. Editors can edit multi-stream video at resolutions from “offline quality” and DV-25 up to uncompressed SD and high-end compressed HD such as Avid’s DxHD. Add 10 Gigabit support to work at uncompressed HD resolutions or for higher stream counts at lower resolutions.

### The Industry’s Only Project Sharing for Apple and Avid Editors

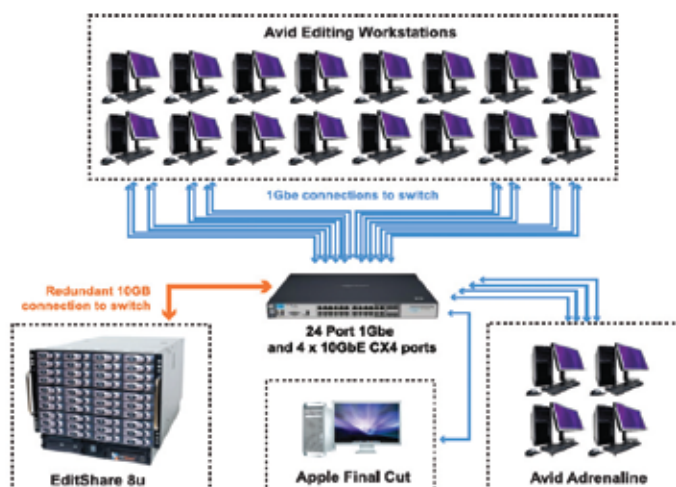
The EditShare Storage Series systems are optimized to expertly manage media for production workgroups. Users of Avid, Apple, Adobe, Autodesk, Digidesign, Media 100 and Sony can access and share in real-time a common pool of media files stored on the EditShare Storage Series. Regardless of the application or platform, source material, work in progress and finished packages are shared and instantly available to all users on the EditShare™ Storage Series network.

Workflow engineered capabilities such as Avid and Apple project sharing unleash creative capabilities. EditShare’s Project Sharing feature works right inside your Avid application, and right alongside Final Cut Pro. Via a file-manager type interface, editors can clearly see all the bins and project files being used by all editors in their group. Bins and projects belonging to another editor automatically open as “Read Only.” Control can easily be transferred from one editor to another. Editors have instant “Read Only” access to each other’s bins.

### Tremendous Scalability with Outstanding Performance

EditShare’s unique Extreme Scalable Architecture (ESA) lets you add more storage as your needs grow without adding complexity or sacrificing speed. Expanding your storage up to 100 or 200 Terabytes – or beyond – is no more complicated than purchasing additional “expansion servers” and plugging them in to your network. Expanding the “ESA way” provides more than additional storage. If you divide the workload between multiple servers, each additional server doubles the number of supported users and streams.

Sample Workflow



Typical EditShare™ customers connect ingest devices, logging stations, editing stations, graphics stations, audio, mixing applications, DVD or streaming media encoders as well as playback servers to their EditShare™ system – so that their whole organization can collaborate using the same storage.

### KEY BENEFITS INGEST

- **Extreme Scalable Architecture**  
Add more storage as your needs grow without adding complexity or sacrificing speed
- **Avid and Apple Project Sharing**  
Multiple Avid or Apple editors to work from the exact same project and get instant “Read Only” access to each other’s bins and sequences.
- **AID-5 Protection**  
Keeps your data safe in the event of drive failure. Much more efficient than wasteful mirroring.
- **File Level Sharing**  
EditShare™ technology allows multiple editors to write to the same volume simultaneously, crucial for efficient workflow .
- **Powerful Synchronization/ Backup Tool**  
Duplicate media files across two or more servers, whether located in the same building or on the other side of the world.
- **Gigabit Ethernet Based, Edit multi-stream video at resolutions from “offline quality” and DV-25 up to uncompressed SD and high-end compressed HD.**
- **SCSI Support**  
Users have the advantages of both a SAN and a NAS with iSCSI.
- **Unlimited Licenses**  
Connect as many clients as you want up to the limits of your storage and network bandwidth. than wasteful mirroring.
- **Deletion Security**  
Control who can delete files, and when. Delete to Trash, and Undo if you discover you deleted something by accident.



# World's First Portable Shared Storage Solution

## Industrial Strength Shared Storage for Mobile Editing

From field to finish, EditShare™ products are becoming the solution of choice for maximum storage capacity and innovative collaborative workflow. And now we introduce EditShare™Field, the world's first portable shared storage solution. Ideal for news and production teams out on location, EditShare™Field gives users a real-time collaborative editing workflow with unparalleled flexibility and reliability. The turnkey EditShare™Field solution incorporates the award-winning media and project sharing technologies from EditShare™ in an all-in-one ruggedized chassis developed specifically for mobile and location editing. Its straightforward plug and play design enables EditShare™Field users to easily connect and immediately begin sharing media and project data – regardless of the conditions, situation or geographic location.



## Open Architecture fits any Workflow

Covering big news stories with multiple field editors? Cutting features or quick-turnaround events on location? For these and other similar challenges, EditShare™Field can revolutionize your workflow. Like all EditShare™ media sharing and storage products, EditShare™Field supports a wide range of editing and compositing applications including products from Adobe, Apple, Autodesk, Avid, Canopus and Media100. EditShare™Field stores audio and video files in a central networked location and connects to laptops and desktops over standard Gigabit Ethernet. The EditShare™Field supports all SD and compressed HD resolutions (including DNxHD). Its rules driven workflow ensures no data is accidentally overwritten or destroyed and enables small editing groups to work with maximum efficiency and creativity.

## EditShare™ Customers

Air France, Paris  
 Al Jazeera, United Arab Emirates  
 Atlas Media, New York  
 BBC, London  
 Big Brother (Croatia and Serbia)  
 Blink Productions, Connecticut  
 Boeing, Los Angeles  
 Brainbox TV, Maryland  
 Channel 10, Israel  
 Channel 7, Australia  
 Cutting Edge, Australia  
 DMS Productions, Los Angeles  
 Element Productions, Boston  
 Filmmore, Denmark  
 Florida State University  
 Fox/National Geo, Japan & Korea  
 HSBC Bank, London  
 Hybrid Films, New York  
 ION Media, West Palm Beach  
 KLAS TV, Las Vegas  
 KMSB TV, Arizona  
 KSMB TV, Wyoming  
 Lion TV (All3Media), London  
 MBC Group, Beirut  
 Nordisk Films, Norway  
 Performance Post, Universal City  
 Portland Trailblazers, Oregon  
 Stargate Films, Pasadena  
 Studio Hamburg, Germany  
 TPS France (Infosport)  
 Und Bitte Entertainment, Germany  
 VEO TV, Spain  
 Walt Disney, Singapore  
 West Virginia University  
 WLAJ TV, Michigan  
 WSIL TV, Illinois

## Features

- DV / SD / HD (compressed)
- 2 streams uncompressed SD
- 10 streams DV25
- Cross platform support (Mac and PC)
- Mixed Software Environments
- Supports workstations and laptops
- Quota control
- Project Sharing with Avids
- RAID 5 protected storage
- 3TB in a small form factor 11.8 ins (w) x 8.8 ins (h) x 12.9 ins (d)
- Inexpensive Gigabit Ethernet protocol
- Portable and ruggedized design
- Built-in UPS
- Dual Redundant External Power Supplies
- Quiet



# High Performance Shared Storage for Small to Mid-Size Workgroups

Based on the high performance architecture found in the flagship EditShare Rack series, EditShare Metro is designed to perfectly support the small to mid-size editing environment.

EditShare storage technology leverages the power and affordability of Gigabit Ethernet to offer seamless media sharing for creative professionals using Adobe, Apple, Autodesk, Avid, Boris FX, Grass Valley EDIUS, Digidesign, Media 100, and Sony editing and compositing applications. Turn-key deployment and user friendly administration tools ensure a simple set-up and protected collaborative process for users at any technical skill set.



## EditShare™ Customers

EditShare™ systems are powering the creative process today at hundreds of broadcasters and production companies, schools and corporations around the world.

- Air France, Paris
- Al Jazeera, United Arab, Emirates
- Atlas Media, New York
- BBC, London
- Big Brother (Croatia and Serbia)
- Blink Productions, Connecticut
- Boeing, Los Angeles
- Brainbox TV, Maryland
- Brighthouse-Time Warner, CA
- Channel 10, Israel
- Channel 7, Australia
- Chelsea TV, UK
- Cutting Edge, Australia
- DMS Productions, Los Angeles
- Element Productions, Boston
- Filmmore, Denmark
- Florida State University
- Fort Lewis Army Base, WA
- Fox/National Geo, Japan & Korea
- HSBC Bank, London
- Hybrid Films, New York
- ION Media, West Palm Beach
- KLAS TV, Las Vegas
- KMSB TV, Arizona
- KSMB TV, Wyoming
- Lion TV (All3Media), London
- MBC Group, Beirut
- Media Prima, Malaysia
- Nordisk Films, Norway
- Performance Post, Universal City
- Portland Trailblazers, Oregon
- Resolution Digital Studios
- Royal Air Force, UK
- Stargate Films, Pasadena
- Studio Hamburg, Germany
- TPS France (Infosport)
- Und Bitte Entertainment, Germany
- VEO TV, Spain
- Walt Disney, Singapore
- West Virginia University
- WLAJ TV, Michigan

## Editshare Metro Key Benefits

- **File Level Sharing.** EditShare™ technology allows multiple editors to write to the same volume simultaneously, crucial for efficient workflow.
- **SD to HD** – support for any format from DV-25 and DV 50 to Uncompressed SD, Avid DNxHD (145 and 220) and Apple ProRes (standard and HQ).
- **Unique Avid and Apple Project Sharing feature** enables multiple Avid or Apple editors to work from the exact same project and get instant “Read Only” access to each other’s bins and sequences.
- **Gigabit Ethernet Based.** Edit multi-stream video at resolutions from “offline quality” and DV-25 up to uncompressed SD and compressed HD (Avid DNxHD and ProRes) using cost effective Gigabit Ethernet Technology. Add multiple Gigabit Ports for direct connections to editing workstations.
- **RAID-5 Protection** keeps your data safe in the event of drive failure. Much more efficient than wasteful mirroring. File Level Sharing. EditShare™ technology allows multiple editors to write to the same volume simultaneously, crucial for efficient workflow.
- **Extreme Scalable Architecture (ESA)** easily expandable adding complexity or sacrificing speed.
- **iSCSI Option** – Users have the advantages of both a SAN and a NAS with iSCSI. Enjoy the simplicity and power of a file-level sharing NAS while benefiting from the block-level SAN-type connectivity required for applications such as Digidesign’s Pro Tools and Avid Nitris DS systems.
- **Powerful Synchronization/BackupTool.** Duplicate media files across two or more servers, whether located in the same building or on the other side of the world.
- **No per seat licenses.** Connect as many clients as you want up to the limits of your storage and network bandwidth.
- **Simple Administration** – Administrators manage all storage from a single graphical interface, while users connect through an easy-to-use login client.